

Children's Cabinet Meeting Agenda

March 26, 2018

- ▶ Welcome
- ▶ Adoption of minutes
- ▶ Strategic Initiative Presentation:
 - ▶ 3rd Grade Reading Action Plan: communications plan update
- ▶ Strategic Goals Presentation: Physically Healthy & Safe and Supported by Stable Families & Communities
 - ▶ DCYF strategic planning presentation
 - ▶ Data Ecosystem project presentation
 - ▶ Updates on interagency projects
- ▶ Discussion

Third Grade Reading Update: Campaign Strategy

- ▶ March: Highlight Work to Date
 - ▶ Articles in the *Providence Journal* and WPRI on a RIDE attendance tool being piloted in the East Providence School District
 - ▶ State of Education address
- ▶ April: Celebrate Reading Week
 - ▶ Governor Raimondo will issue a proclamation the week of April 9th
 - ▶ Guest reader visits throughout the month by Governor Raimondo and Cabinet Directors
 - ▶ RI Reads partner event
- ▶ May: Promote Summer Reading Programs
 - ▶ Read Across Rhode Island Event on May 19th
 - ▶ Outreach to sign up students for summer reading programs

DCYF

CHILD AND YOUTH CENTERED
FAMILY FOCUSED
COMMUNITY INCLUSIVE



Department's Vision

Healthy Children
and Youth

Strong Families

Diverse, Caring
Communities

Department's Mission

Partner with families and communities to raise safe and healthy children and youth in a caring environment.

DCYF

PRIORITIES
PROGRESS REPORT



DCYF serves three populations

CPS

Child
Protective
Services

CSBH

Community
Services &
Behavioral
Health

JJ

Juvenile
Justice

Establishing standardized tools for screening and assessment at our front door

Ensuring children are raised in families--kinship, specialized foster care, timely adoption and guardianship

Ensuring youth who leave our system without a permanent family have connections and supports to be successful

Child Protective Services



**Standing
the CSBH back up**

**Creating access to
services outside of the
Child Protective
Services (CPS) front
door**

Community Services & Behavioral Health

A large yellow circle is centered on the right side of the slide. Inside the circle, the letters 'CSBH' are written in a bold, black, sans-serif font.

CSBH

Preventing our youth on probation from going deeper into the juvenile justice system

Ensuring safety for staff and youth at the Rhode Island Training School

Juvenile Justice

A large yellow circle is centered on the right side of the slide. Inside the circle, the letters 'JJ' are written in a bold, black, sans-serif font.

JJ

Other organizational priorities that will assist the Department in providing the best care for our children, youth and families

A yellow circle containing the text 'Workforce' in bold black font.

Workforce

A yellow circle containing the text 'Partners' in bold black font.

Partners

A yellow circle containing the text 'Resources' in bold black font.

Resources

A yellow circle containing the text 'Tech' in bold black font.

Tech

A yellow circle containing the text 'Comms' in bold black font.

Comms

Diverse, well-trained,
skilled, and stable
workforce

Continually filling
frontline vacancies

Professional development

Strengthening leadership
and supervision

Organizational health

Workforce Development

A large yellow circle is centered on the right side of the slide. Inside the circle, the word 'Workforce' is written in a bold, black, sans-serif font.

Workforce

Upgrading the RICHIST system

Investing in mobile technology for our workforce

Establishing WiFi in our buildings

Technology



Framing child safety as a public health issue

Communications



Community stakeholders
including families,
providers, educators,
OCA, CASA,
faith-based leaders

DCYF Staff

Family Court

Union Leadership

Strengthening Key Partnerships

A large yellow circle is centered on the right side of the slide. Inside the circle, the word 'Partners' is written in a bold, black, sans-serif font.

Partners

Maximizing federal revenue opportunities such as Medicaid, Title IV-E, TANF

Continually evaluating our services to ensure that resources are expended on the interventions that work

Resources

A large yellow circle is centered on the right side of the slide. Inside the circle, the word 'Resources' is written in a bold, black, sans-serif font.

Resources

DCYF

WHERE ARE WE GOING?
AND
PREVENTION OUTCOMES



Where Are We Going?

Pivot to Prevention

Consolidated Operations Plan in Service to Prevention

Considerations--CFSR (Child & Family Services Review), Reports from Office of the Child Advocate, Children's Rights Settlement, and feedback from staff, families, providers, Family Court, lawmakers, and other stakeholders

Prevention Outcomes

Reduce repeat maltreatment

Reduce maltreatment in foster care

Reduce recidivism in juvenile justice

Reduce hospitalizations

Diversion from institutional placements/state care
(voluntary relinquishments)

Maybe other prevention-related targets--opioid crisis,
race equity, young children, etc.

Process

Feedback from a variety of sources--all staff meeting, Public Occurrences event, CFSR (Child & Family Services Review), various reports, Children's Rights settlement, etc.

2 Strategy Sessions with a smaller group of key stakeholders

Final vetting process with DCYF's senior team

By the end of April, the Department will have an operational plan focused on prevention

DCYF

5 KEY AREAS COMPREHENSIVE OPERATIONAL PLAN



5 KEY AREAS

Child and Youth Safety as a Public Health Issue

Establishing a Stronger Network of Prevention

**Continuing to Ensure Competent, Stable, Diverse,
and Accountable Workforce**

Fiscal Soundness

Effectiveness of Services

EOHHS DATA ECOSYSTEM

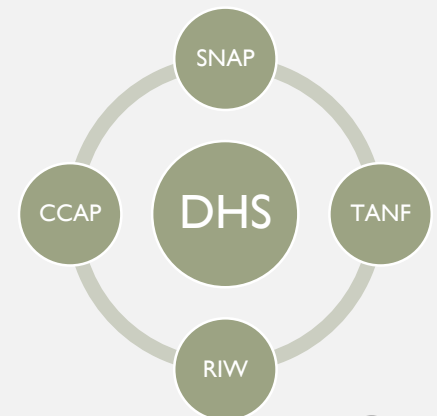
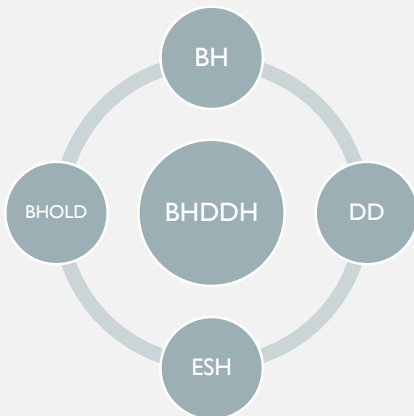
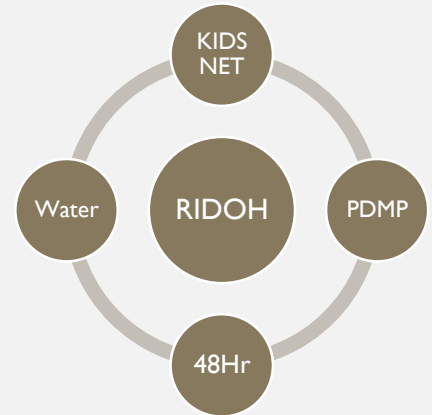
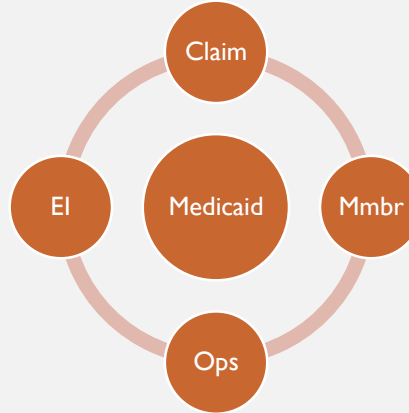
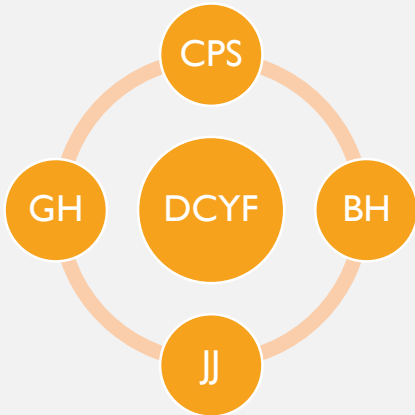
Vision and Status

Children's Cabinet | March 26, 2018

What could we do if we could answer these questions easily and accurately?

- ❖ How do families at risk of child maltreatment interact with the state *before* a DCYF investigation? How can we support them?
- ❖ Which children are eligible for early intervention services but never enrolled? Where are the children who have dropped off?
- ❖ Which parents of young children are in treatment for opioid use disorder? Who is using but has not sought help?
- ❖ What happens during transitions to adulthood for children with BH needs?
- ❖ How do children change schools when they move among foster homes? Can we help stabilize enrollment?

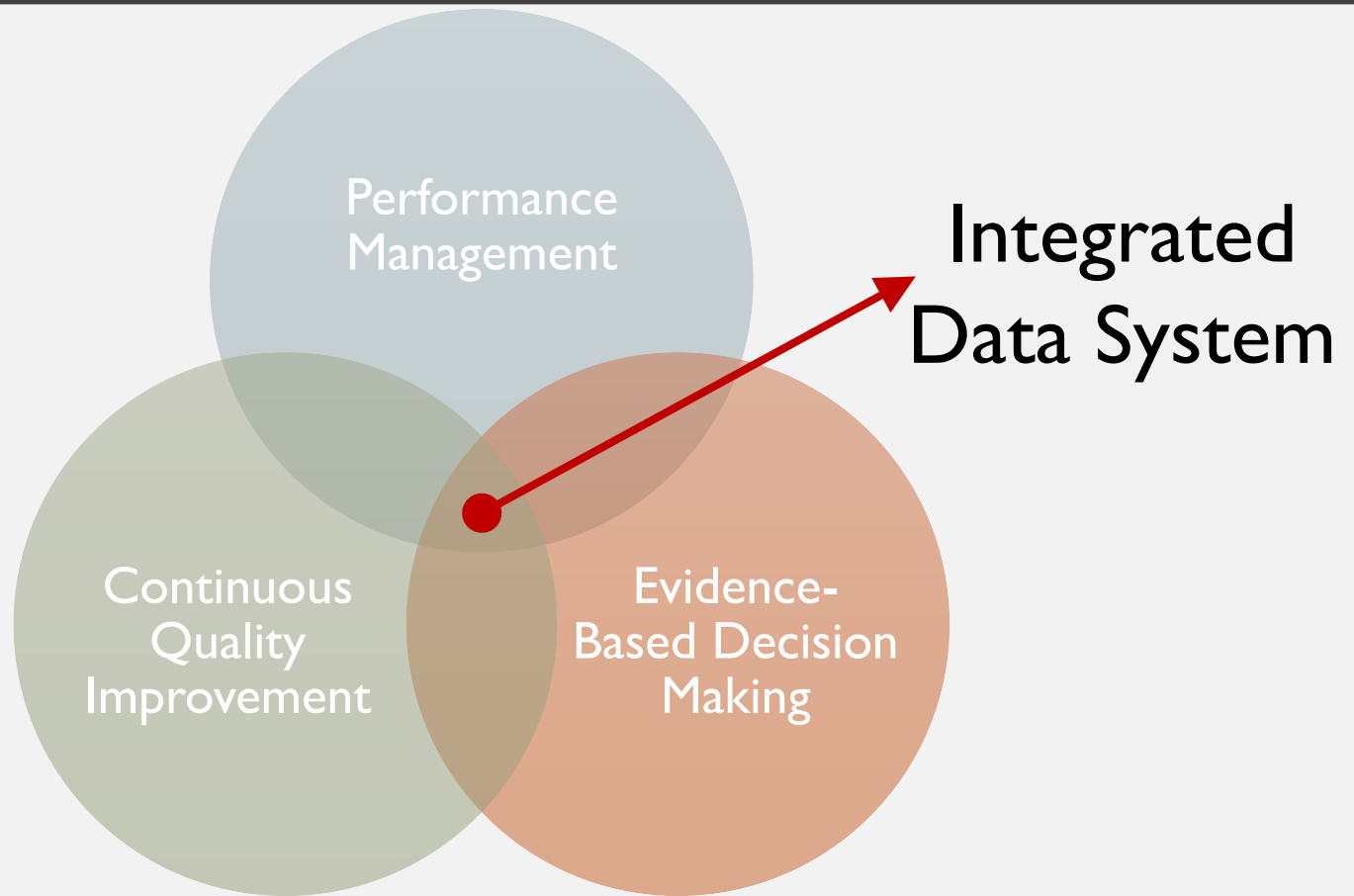
EOHHS' MOST COMPLEX POPULATIONS TOUCH MANY AGENCIES BUT OUR DATA AREN'T CONNECTED



- Child maltreatment prevention
- Young adult behavioral health
- Family-based engagement
- 3rd grade reading
- Opioid Use Disorder
- Medicaid high utilizers
- Rebalancing LTSS, DD, DCYF

SOLUTION: INTEGRATED DATA SYSTEM (IDS)

EOHHS DATA ECOSYSTEM



DATA ECOSYSTEM GUIDEPOSTS

MISSION

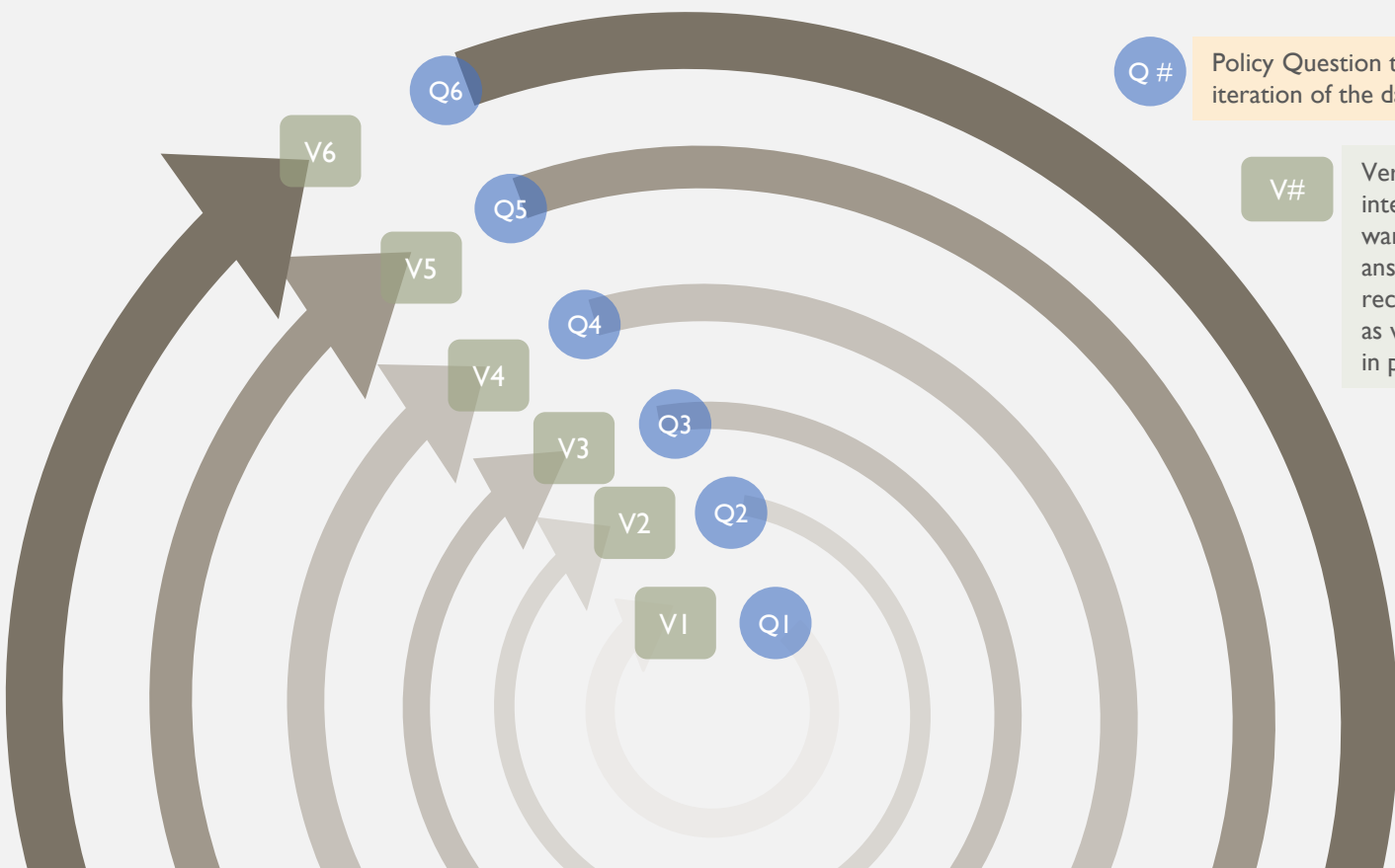
Use
integrated
data to...

- ❖ Develop programs that meet people where they are
- ❖ Help Rhode Islanders fulfill their potential
- ❖ Responsibly steward state resources

PRINCIPLES

Integrated at the person-level
Informs agency operations
State-owned and directed
Self-service analytics

Agency permissions & participation
Agile, project-focused design
Builds on existing assets
Security best practices



Q# Policy Question that drives the next iteration of the data warehouse

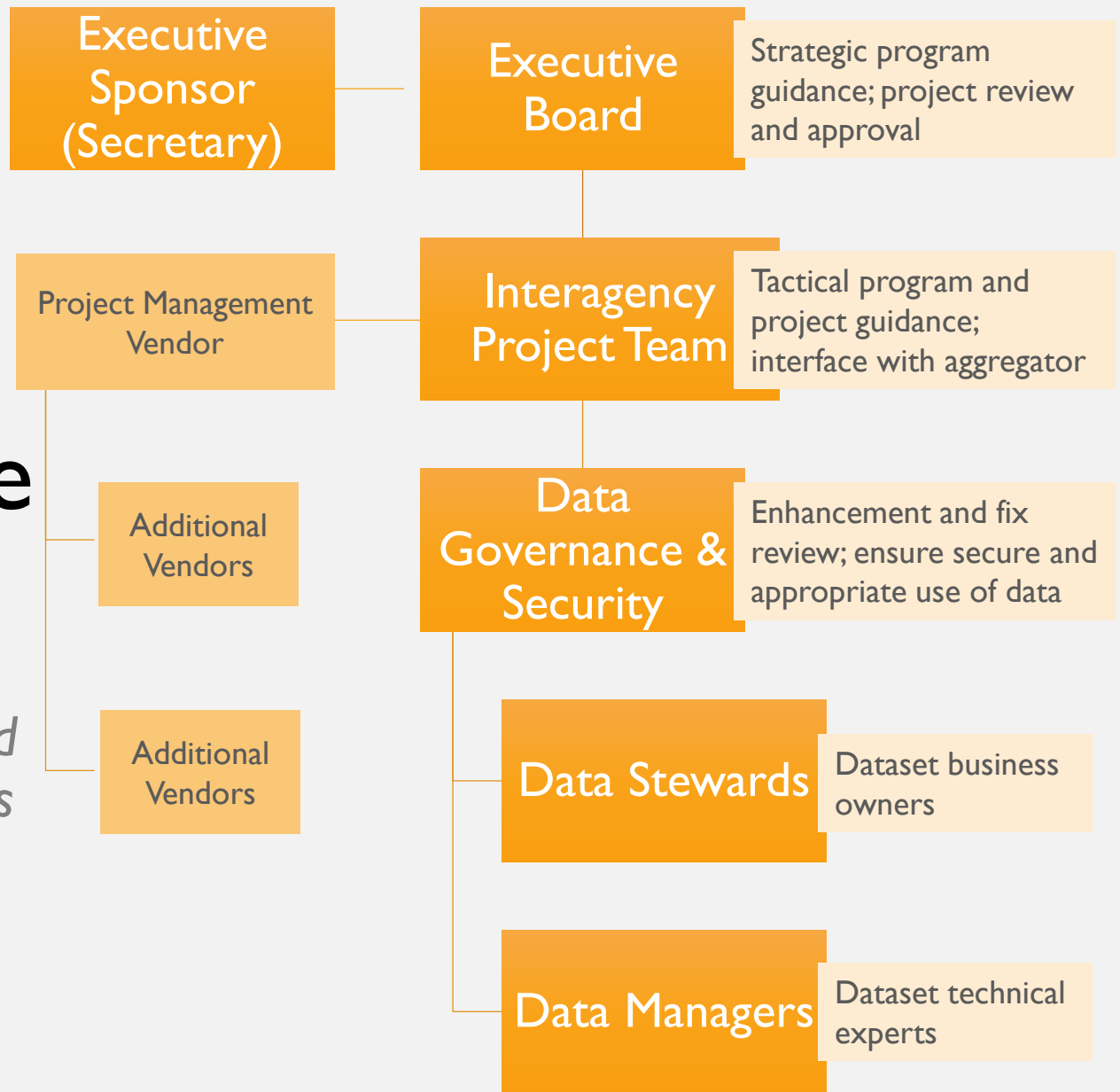
V# Versions of the integrated data warehouse, designed to answer the most recent policy question as well as those posed in previous iterations

Construction of the EOHHS Data Ecosystem

Iterative, Agile development cycles based on a specific policy objective, posed by policy leadership

Ecosystem Project Governance Structure

Strong leadership and oversight, both to guard the data and ensure its effective use, are key.



FUTURE ENHANCEMENTS

Concepts Under Consideration

1. Expand beyond EOHHS
2. Recruit power users / ambassadors
3. Build an Ecosystem Community
4. Move some technology in-house
5. Develop predictive analytic capacity
6. Consider other uses: research, legislative, case management, public

QUESTIONS?

Substance Exposed Newborns (SEN) Task Force

- ▶ Goals: 1) Review, modification and alignment of hospital protocols; 2) Prenatal Referral and Care Coordination; 3) Provider Education; 4) Establishment of Peer Recovery Coach Program to support substance using mothers
- ▶ Agencies Involved: DCYF, EOHHS, BHDDH, RIDOC,
- ▶ For more information:
 - ▶ Contact at RIDOH Margo Katz, SEN Coordinator
Margo.Katz@health.ri.gov
 - ▶ Press Release about SEN Task Force: <http://www.ri.gov/press/view/32521>

DCYF: Opioid Usage, Treatment Resources & Narcan Training

- ▶ Goal: To Provide Early Intervention & Support for Those Families Impacted by Opioid Usage
 - ▶ Increase DCYF staff awareness to the signs & symptoms related to Opioid usage
 - ▶ Educate DCYF staff on the current impact opioids are having on our families
 - ▶ Inform DCYF staff of the available community resources
 - ▶ Provide a brief overview of BHDDH's "CENTER OF EXCELLENCE" program
 - ▶ Offer Narcan training to those staff interested in administering Narcan
- ▶ Agencies Involved: DCYF, BHDDH & RIDMAT/MRC (Private Provider)
- ▶ For more information:
 - ▶ Kevin P. McKenna kevin.mckenna@dcyf.ri.gov
 - ▶ Linda Mahoney linda.mahoney@bhddh.ri.gov

Family Home Visiting Program

- ▶ Goals:
 - ▶ Improve maternal and child health,
 - ▶ Prevent child abuse and neglect,
 - ▶ Encourage positive parenting, and
 - ▶ Promote child development and school readiness
- ▶ Agencies Involved: DCYF, DHS, EOHHS, BHDDH,
- ▶ For more information:
 - ▶ Kristine Campagna Kristine_Campagna@health.ri.gov
 - ▶ <http://www.health.ri.gov/familyvisiting>

A WHOLE FAMILY APPROACH TO JOBS: HELPING PARENTS WORK AND CHILDREN THRIVE

▶ **Goals:**

- ▶ To identify program and policy alignment opportunities at the local, state, and federal level that will improve employment equity and economic stability for low-income parents and that will move towards undoing intergenerational poverty for families.
 - ▶ To support state-driven policies and systems alignment that improves access to and success in education, training and employment for parents.
 - ▶ To develop a regional learning community focused on whole family approaches to employment equity that is adaptable to other regions nationally.
- ▶ **Agencies Involved:** RIDHS, DCYF, RIDLT, RICC, Administration for Children and Families, National Conference of State Legislatures, Office of the Senate President, Senator Josh Miller, Senator Gayle Goldin, RI Kids, Count, Economic Progress Institute United Way and many others

For more information:

- ▶ [A Whole Family Approach to Jobs Project](#)
- ▶ [A Whole Family Approach to Jobs Launch Meeting, September 2017](#): summary of the meeting from September
- ▶ [Cliff Effect Webinar](#): archived webinar from February 15.