

Children's Cabinet

August 25, 2025

Agenda

- Welcome and Introductions
- Vote on adoption of July meeting minutes
- Preschool Development Grant – update
- Child Care Assistance Program
- Public Comment
- Adjournment



Preschool Development Grant

Highlights of what we've done
and what we are doing

**RHODE
ISLAND**

Preschool Development Grants Birth to Five Overview

PDG B-5 grants are available to states and territories to support early childhood services for children birth to age five. They are administered through the Office of Health and Human Services.

Overview

The Preschool Development Grant Birth Through Five (PDG B-5) initiative supports competitive federal grants to states and territories (“states”) to **assist in the strengthening of their early care and education (ECE) systems by improving partnerships, collaboration, and coordination among existing birth through age 5 (B-5) programs and services.** With strengthened ECE systems, states can **leverage private, local, state, and federal funding** and other resources to **increase the quality of and access to ECE and maximize parental choice and meaningful family engagement.** Supporting states and territories in building, enhancing, and expanding their ECE systems allows them to **improve the necessary infrastructure to sustain the system and fund key initiatives** that enhance quality and coordination across early childhood programs. In turn, these efforts contribute to state efforts to **provide young children from families with low income or other disadvantages access to high-quality ECE experiences that prepare them to be successful in kindergarten and beyond.**

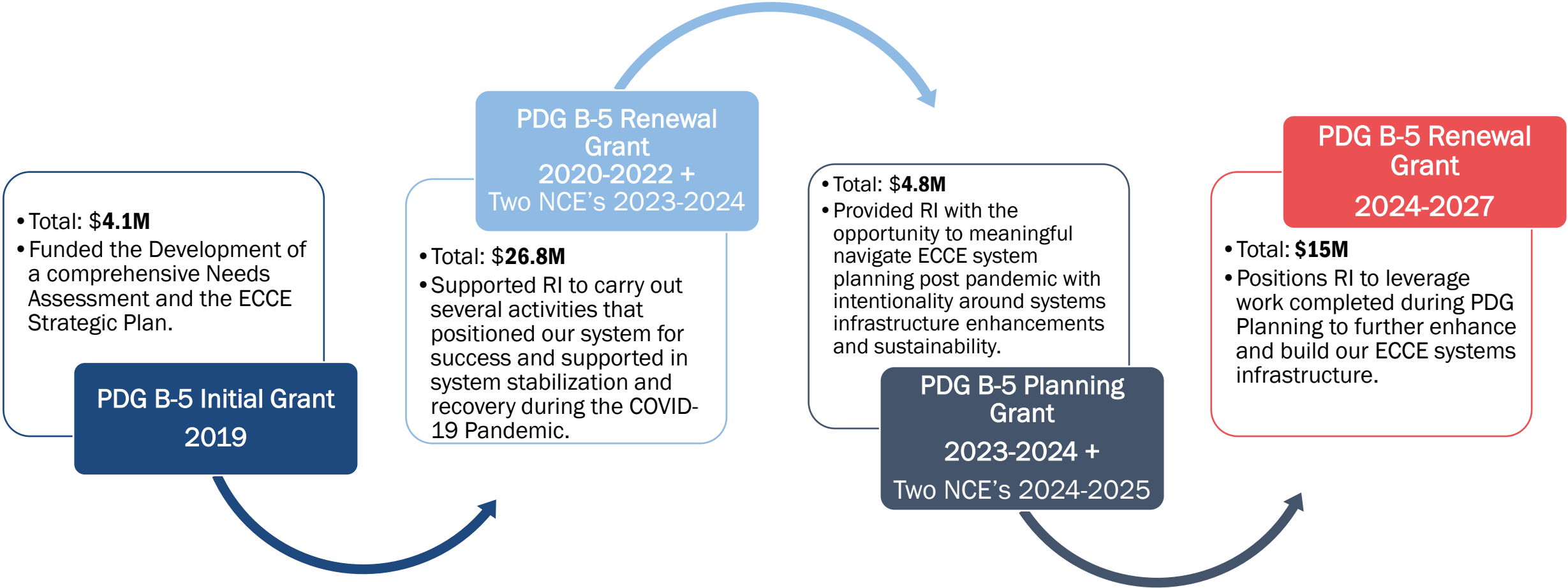
PDG Award Types

Planning: 1 year award
Renewal: 3 year award

To be eligible to apply for a renewal grant state’s must have received a planning grant and be in good standing.



RI's Preschool Development Grants: A Historical Glance



PDG Birth-Five's Impact in RI: An overview

Rhode Island has benefitted immensely from PDG funding. Examples of past and current activities include:



Children & Families

- Expanded access to RI Pre-K
- Parent and Caregiver +DHS Family Advisory Councils
- Parent Leadership Training
- Family Navigators at Health Zones
- RI Pre-K Lottery Analysis
- MLL Needs Assessment
- Developmental Supports Needs Assessment
- Family Visiting Expansion & Referral
- Contracted Slots



Workforce

- Workforce Compensation Study
- Step Up to WAGE\$/WAGE\$
- Family Home visiting Workforce Bonuses
- Child Care WAGE\$
- TEACH Grants
- Workforce Development Pathways
- Public Awareness Campaign



Quality Improvements

- Infant Toddler Registered Apprenticeship
- Career and Technical Education Project
- RIELDS Revisions
- PK-2 Special Ed Cert
- Health & Safety Modules
- BrightStars Review
- RI Pre-K Monitoring & Continuous Quality Improvements
- Facilities Planning Grants



Systems

- Needs Assessments
- Strategic Planning
 - ECCE System/ IT
 - Infant Toddler
- RI Start Early Data System
- Infant and Early Childhood Mental Health
- Child Care Management System Analysis
- Child Care Resource & Referral
- Higher Ed. Coursework Transfer Agreement

Preschool Development Renewal Grant Birth-Five 2024-2027

Rhode Island was awarded a PDG B-5 Renewal Grant in September of 2024. The award is approximately \$5M annually for 3 years. DHS is the lead agency with cross-departmental partnerships at EOHHS, RIDE and RIDOH.

PDG B-5 Renewal Grant Priorities (as noted in NOFO released in May 2024)

- **Strengthen early care and education programs in a mixed delivery system**
- **Support ECE workforce**
- **Increase family involvement in ECE programs**
- **Improve ECE program quality**
- **Expand access to early childhood services.**
- **Create seamless learning experiences from birth to elementary school**

PDG B-5 Renewal Required Grant Activities

- **Activity 1:** Update comprehensive statewide B-5 needs assessment
- **Activity 2:** Update comprehensive statewide B-5 strategic plan
- **Activity 3:** Maximize family participation and engagement in the B-5 system
- **Activity 4:** Support the B-5 workforce
- **Activity 5:** Support program quality improvements
- **Activity 6:** Subaward to enhance quality and expand access to programs & services
- **Bonus 1:** Increase workforce pay and benefits
- **Bonus 2:** Support social-emotional development and mental health



PDG B-5 Renewal 2024-2027 Activities 1 & 2

RI will take steps to conduct comprehensive needs assessments around ECCE Spending and developmental supports for children with disabilities, as well as update our Strategic Plan.

Activity 1: Update Comprehensive Statewide B-5 Needs Assessment

Agency	Activity	Description	Phase
DHS	ECCE Spending Analysis	Building upon recommendations from the ECCE Governance Analysis, RI proposed to conduct an ECCE Spending Analysis embedded into the strategic planning work that will position us to make strategic fiscal decisions across the ECCE system and streamline shared work across agencies.	Implementation
RIDE	Developmental Supports Analysis	RI utilized T&TA through the ACF for inclusion of children with disabilities which included a survey as it relates to our current infrastructure which will be utilized in conjunction with an analysis done by RIPIN to understand the most strategic and feasible approach to supporting children and families with disabilities in B-5	Implementation

Activity 2: Update Comprehensive Statewide B-5 Needs Assessment

Agency	Activity	Description	Phase
DHS	Update ECCE Strategic Plan	RI will update it's Children's Cabinet Strategic Plan.	Implementation

PDG B-5 Renewal 2024-2027 Activity 3

RI will work to maximize family participation and involvement through a variety of activities informed by PDG planning and enhancing existing projects that have proven effective in supporting families.

Activity 3: Maximize Family Participation and Involvement

Agency	Activity	Description	Phase
RIDE	RI Pre-K Lottery Enhancements	RIDE will be making enhancements to the Lottery process as determined by the analysis completed with PDG Planning dollars. This will ensure they are positioned to reach as many families as possible and ensure system efficiency.	Implementation
RIDOH	Healthy Tomorrows Continuation	RIDOH will be continuing their Health Tomorrow's program which is an innovative project that supports connecting families enrolled in family visiting to medical homes.	Implementation
RIDOH	Parent Leadership Training Institute	RIDOH will be accepting applications for families to attend the National Parent Training Leadership Institute.	Implementation

PDG B-5 Renewal 2024-2027 Activity 4

RI will leverage mini grants to improve RISES data integration and recruit prospective ECE educators into the workforce and support current members in accessing workforce development pathways.

Activity 3: Support the Workforce

Agency	Activity	Description	Phase
DHS	RISES Incentivization for Licensed Providers	The goal of this activity is to explore program needs to pilot a contracted slots model in preparation for the ACF required deadline. To do so, we need a complete and comprehensive data set for all workforce members and programs. DHS launched a mini grant application to incentivize RISES participation for programs in response to the licensing system of record launch. The application window is currently open.	Implementation
DHS	ECCE Public Awareness Campaign	The objective develop a communication and awareness campaign to increase the public's knowledge of career and educational opportunities and develop collateral that can be utilized on an ongoing basis to promote the State funded ECCE Workforce Development opportunities and supporting workforce recruitment initiatives, decrease the number of open positions in the RI DHS-approved early learning programs, and measure the effectiveness of the campaign.	Implementation

PDG B-5 Renewal 2024-2027 Activity 5

RI will continue to support quality improvements through a number of strategic activities that will position us to enhance and sustain investments within our ECCE infrastructure.

Activity 5: Support Program Quality Improvements			
Agency	Activity	Description	Phase
EOHHS	ECCE Scorecard	The ECCE Scorecard which serves as RI’s PDG B-5 Program Performance Evaluation is shifting into a maintenance phase. Dashboards will be maintained and updated as needed.	Implementation
DHS	Infant Toddler Study Recommendations	This activity was proposed to carry out steps as outlined in RI’s IT Strategic Plan. DHS worked with a vendor to do a Child Care Management System Landscape Analysis and Interoperability Plan as key steps towards having a live supply and demand dashboard of RI’s ECCE capacity.	Implementation

PDG B-5 Renewal 2024-2027 Activity 5 Continued

RI will continue to support quality improvements through a number of strategic activities that will position us to enhance and sustain investments within our ECCE infrastructure.

Activity 5: Support Program Quality Improvements			
Agency	Activity	Description	Phase
RIDE	RI Pre-K Continuous Monitoring and Program Quality Improvements	The ECCE Scorecard which serves as RI’s PDG B-5 Program Performance Evaluation is shifting into a maintenance phase. Dashboards will be maintained and updated as needed.	Implementation
RIDE	FTE to support RI Pre-K Monitoring and Program	This will support RIDE in hiring an FTE dedicated to supporting in advancing the RI Pre-K Continuous Monitoring and Program Quality Improvement plan developed with PDG Planning dollars.	Development
DHS	RISES System Enhancements	Funding from PDG will be utilized in the continued development and maintenance of the RI Start Early Data System.	Implementation

PDG B-5 Renewal 2024-2027 Activity 6

RI will take steps to enhance our current federally required Child Care Resource & Referral while also planning to build out key infrastructure to ensure key data is available to efficiently and effectively support families.

Activity 6: Subaward to Enhance Quality and Expand Access

Agency	Activity	Description	Phase
DHS	Child Care Resource & Referral	To ensure RI is best position to support families in accessing care and DHS is currently considering a phased approach for this activity as the RISES system is being developed. Year 1 included enhancements to our existing infrastructure and year two will include taking steps towards building a data management system infrastructure.	Implementation

PDG B-5 Renewal 2024-2027 Bonus Activities

RI will continue to build upon key activities to support the ECE workforce and children’s social-emotional and mental health.

Bonus Activity 1: Increase Workforce Pay and Benefits

Agency	Activity	Description	Phase
DHS	WAGE\$	RI will continue to provide wage supplements to eligible members of the workforce who meet the employment, qualifications and eligibility criteria.	Implementation

Bonus Activity 2: Support Social Emotional Development and Mental Health

Agency	Activity	Description	Phase
RIDE	Kids Connect Training	Building upon the recommendations from the Kids Connect analysis in PDG Planning RI has planned to develop training modules to support programs and the workforce in supporting children’s social, emotional and mental health, with a particular focus on supporting those in the Kids Connect program.	Development

Thank you to participating state agencies!

While DHS is the lead agency for the Preschool Development Grant work, we wouldn't have continued to receive the funding without the successful implementation of so many projects by the various agencies working with us.

- EOHHS, RIDE and RIDOH have been instrumental in it's continued success. THANK YOU!

Questions? Comments?

Please feel free to reach out anytime to

PDG Grant Manager: Catherine.Green@dhs.ri.gov

PDG Lead & Authorizing Official:

Nicole.Chiello@dhs.ri.gov



Rhode Island Child Care Assistance Program

Children's Cabinet
August 2025



Today's Agenda

A walk through the Rhode Island Child Care Assistance Program

01

Overview of Rhode Island's Child Care Assistance Program

02

Current Initiatives in Child Care

03

Looking Ahead



RI DHS Office of Child Care

Child Care Licensing

- Monitoring of child care programs
- All complaint investigations and non-compliances
- Regulations for child care licensure

Child Care Assistance Program

- Provides subsidies to offset the cost of child care to families who meet certain guidelines
- Internal Monitoring
- CCAP for Child Care Pilot

Quality Initiatives & Grants Management

- Administers CCDBG Quality dollars in grants & contracts
- Program management of contracts
- Oversee additional funding (PDG. Congressionally delegated funds)

Head Start Collaboration Office

- Facilitate collaboration among Head Start agencies
- Provide structure and a process for OHS to work and partner with state agencies to formulate, implement, and improve state and local policy and practices.

RISES Rhode Island Start Early System

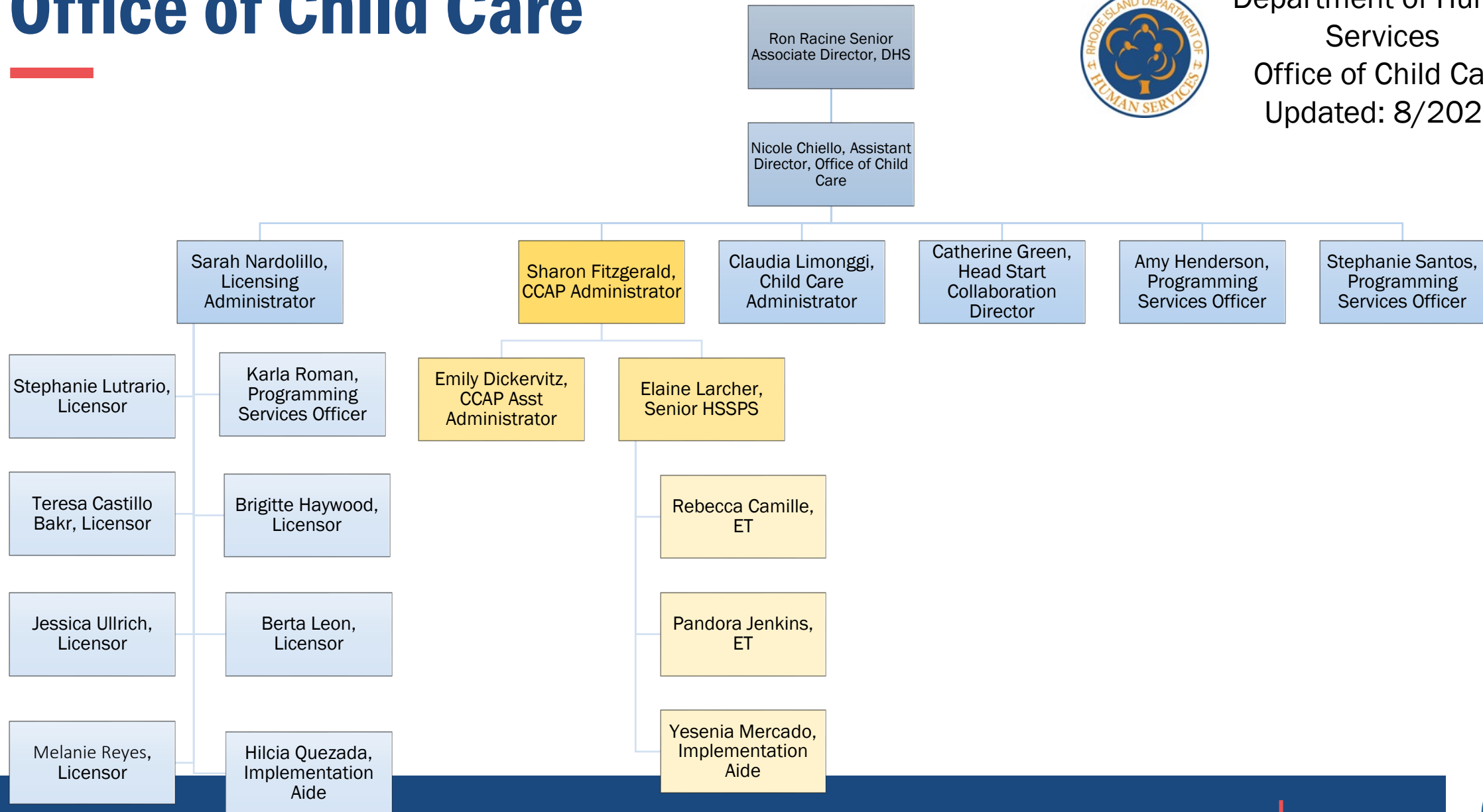
- RI's early childhood workforce registry, licensing system of record, and upcoming consumer portal and child care resource and referral platform.
- Workforce Registry Director ensures the data is accessible for informed, data-driven decision-making regarding how to invest in children and families in Rhode Island.



Office of Child Care



Department of Human Services
Office of Child Care
Updated: 8/2025



CCAP Impact

Families need access to affordable, high-quality child care so parents can work and their children can grow, learn and thrive. The Child Care Assistance Program helps make this possible for RI families.

- Helps make quality child care affordable for families with lower incomes.
- Promotes equal access to child care.
- Supports workforce participation by parents, reduces absenteeism at work, and allows for higher retention of income to spend on basic needs like food and housing.
- Supports parents pursuing training or education to promote job readiness.
- Supports teen parents completing their education.
- Provides quality early care and education experiences for children.
- Promotes family self-sufficiency.



CCAP Recent Successes

Family Access

- Expanded certification period from 12 months to 24 months
- Increased entry point FPL to 261%
- Capped family co-shares at 7%
- Childcare for Early Childhood Educators Pilot

CCAP Expansion

- CCAP for College
- CCAP for Child Care Educators and Child Care Staff
- Eligibility extended to family child care providers
- Job search as a need reason

Provider Support

- Center Infant Rate Increase of 20%
- Overall CCAP reimbursement rate increases in SFY 24 & SFY25
- Expanded allowable absence policy
- New CCAP Provider Handbook
- New CCAP Provider Orientation is available through the CELP for 2 PD Credits

RI Bridges System

- Regular system enhancements to ensure:
 - State & Federal Compliance
 - Eligibility Accuracy
 - Customer Access



Office of Child Care – By the Numbers (July 2025)

Licensed Capacity by Provider Type		
Provider Type	Programs	Seats
Family Child Care	398	3,033
Center Based Care	417	31,505
Total	815	34,538

CCAP Enrollment by Age Group	
Age Group	Children in CCAP
Infant	465
Toddler	1,131
Preschool	3,131
School-Age	2,483
Total	7,210

BrightStars Rating by Provider Type		
Star Rating	Center	Family Child Care
1 Star	105	204
2 Star	71	140
3 Star	65	13
4 Star	65	8
5 Star	54	3
Total	360	368

- Rhode Island currently has 815 child care providers, and 84% of them take our CCAP program (689)
- Typically, our child care community is evenly split at about 50% Family Child Care and 50% child care center.
- Approximately 57% of children approved for CCAP are currently enrolled with approved CCAP providers.



CCAP Enrollment by BrightStars Rating

STAR_RATING	Child Care Facility			Family Child Care			Grand Total
	Infant & Toddler	Preschool	School Age	Infant & Toddler	Preschool	School Age	
1	256	514	590	253	332	221	2,147
2	259	558	398	217	313	239	1,978
3	235	496	486	37	37	30	1,320
4	215	570	467	17	27	14	1,310
5	140	436	201	4	6	1	788
Grand Total	1,079	2,468	2,007	522	704	494	7,197

- BrightStars is Rhode Island's Quality Rating and Improvement System (QRIS)
- CCAP approved providers are required to participate in the QRIS
- Ratings range from Star Level 1 to Star Level 5 and with each star level increase, the CCAP reimbursement rate across all age groups increases



CCAP Application to Enrollment at a Glance

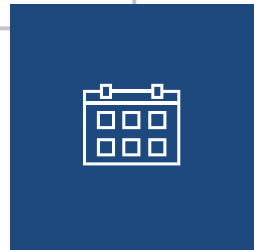


Step 1

Family applies for benefits. A Benefit Decision Notice (BDN) issues when case is processed.

Step 2

Family brings BDN with certification # to the CCAP Approved Provider of their choice

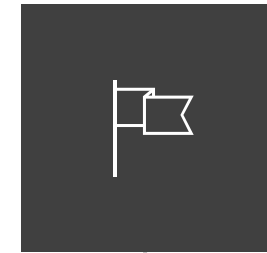


Step 3

CCAP Approved Provider enrolls child for hours requested by parent, up to the child's authorized hours

Step 4

Provider submits attendance per the bi-weekly payment schedule deadline



Step 5

RIBridges processes payments per enrollment, attendance, and appropriate rate



CCAP Eligibility

There are two ways to qualify for payment of child care expenses through the CCAP:

“RI Works or Teen and Family Development Eligible” means the **Rhode Island Temporary Assistance for Needy Families (TANF) Program** extends eligibility for the CCAP to **Rhode Island Works Program (RI Works)** cash assistance recipients, including **Teen and Family Development Program** participants, who meet the need for services.

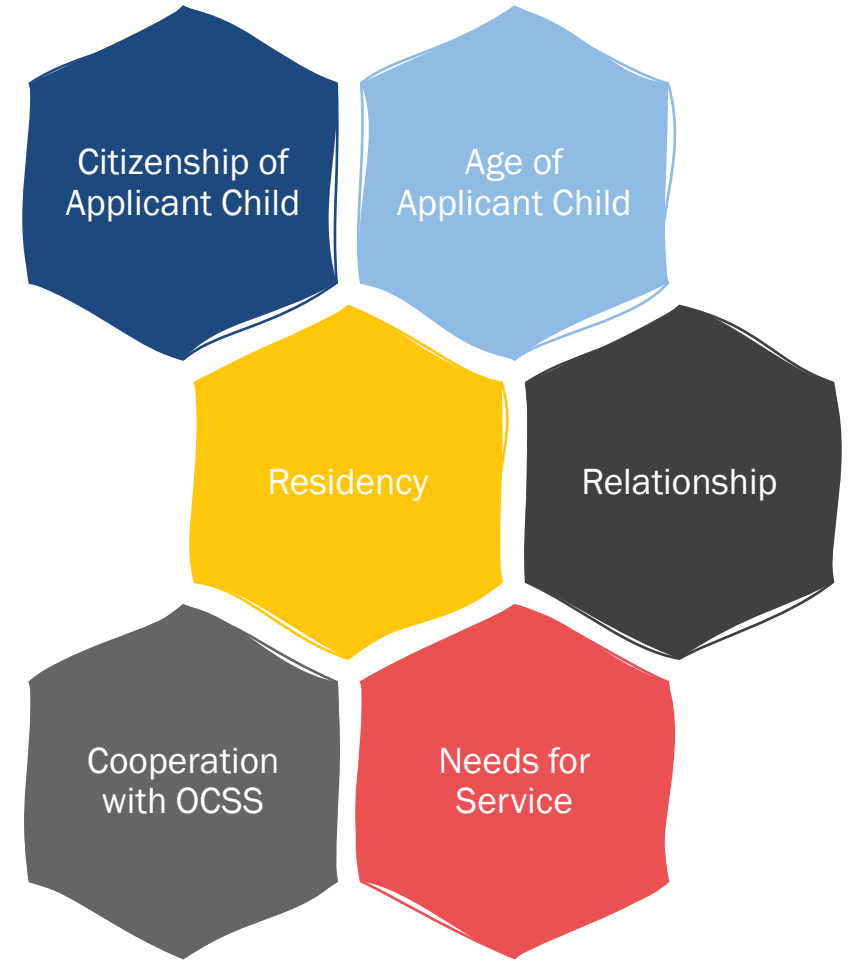
“Income Eligible” means working Rhode Island families, families where a parent(s) is participating in an approved education or training program, and TFD participants who are not RI Works cash recipients may be income eligible for the CCAP if they meet the requirements.

Income Eligible CCAP Approved Activities/Need Reasons
Employment – including Self-Employment
CCAP for College – Degree Program at CCRI, RIC, URI
CCAP for Training – Governor's Workforce Board or DHS Partner Trainings
CCAP for Child Care Educators and Staff



General Eligibility Requirements

For a child to be eligible to participate in CCAP, the family applying for services must meet the general requirements as well as the specific requirements pertaining to either RI Works or TFD or income eligibility. The general requirements are:



See CCAP Policy: [218-RICR-20-00-4.3.1](#)



Income & Asset Limits

At initial application:
Up to 261% FPL

At renewal:
Up to 300% FPL

During the certification
period:
Up to the greater of
300% FPL or 85% SMI

Asset Limit: \$1,000,000

Household Size	261% FPL	300% FPL
2	\$55,202	\$63,450
3	\$69,557	\$79,950
4	\$83,912	\$96,450
5	\$98,267	\$112,950
6	\$112,622	\$129,450



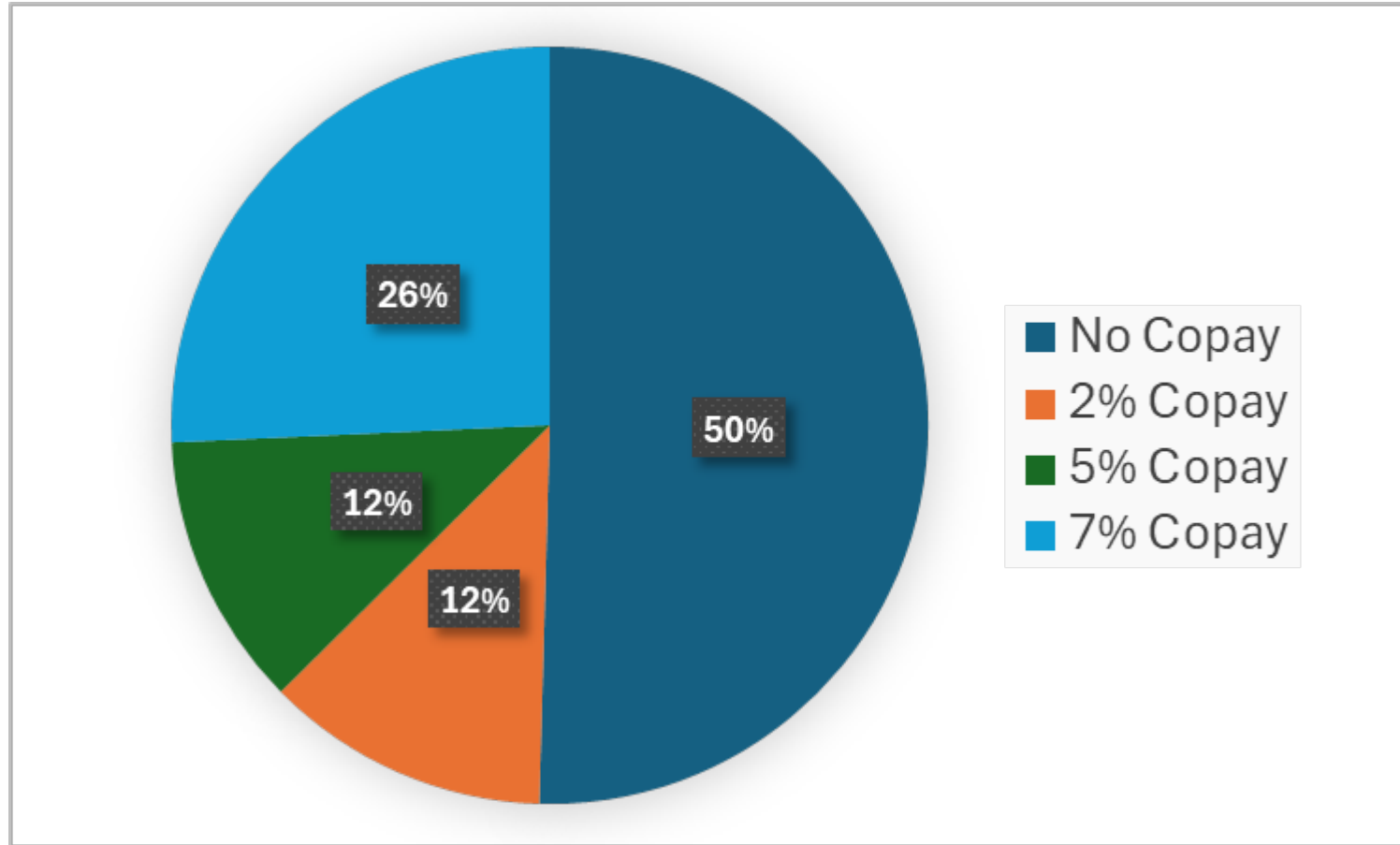
Family Share (Copay) 2025

				Family Size				
Level	Standard FPL	% of Gross Income	Type	2	3	4	5	6
0	<100%	0%	Income Limit	\$21,150	\$26,650	\$32,150	\$37,650	\$43,150
1	100% - 125%	2%	Income Limit	\$26,438	\$33,313	\$40,188	\$47,063	\$53,938
			Family Share	\$8-10	\$10-13	\$12-15	\$14-18	\$17-21
2	125% - 150%	5%	Income Limit	\$31,725	\$39,975	\$48,225	\$56,475	\$64,725
			Family Share	\$25-31	\$32-38	\$39-46	\$45-54	\$52-62
3	150% - 261%	7%	Income Limit	\$55,202	\$69,557	\$83,912	\$98,267	\$112,622
			Family Share	\$43-74	\$54-94	\$65-113	\$76-132	\$87-152
4	261% - 300%	7%	Income Limit	\$63,450	\$79,950	\$96,450	\$112,950	\$129,450
			Family Share	\$74-85	\$94-108	\$113-130	\$132-152	\$152-174



Family Share (Copay) %

Percentage of CCAP families in each Family Share level.



CCAP for Child Care Pilot

The CCAP for Child Care Pilot provides CCAP benefits for early educators and staff employed by licensed early care programs in Rhode Island. Applicants must first apply for regular CCAP and must comply with all regular CCAP eligibility rules with the exception of the income limit. The entry income limit for pilot participants is 300%FPL.

Current Participants

- 683 children from 454 families are currently approved
 - Infant 11%
 - Toddler 26%
 - Preschool 37%
 - School Age 26%
- Enrolled: 532
- No Enrollment: 151

Total Children Approved to Date

957

Providers where pilot participants work

- Currently, pilot recipients work at 225 different child care programs across the state.
 - Centers: 192
 - FCC: 33



24-Month CCAP Certification Period

Beginning July 2025, family CCAP certificates, previously authorized for a 12-month period, are authorized for a 24-month period.

Benefit Changes Mid-Certification

- Families can report changes to their household make-up, their income, their job/training status, etc. at any time
- Reported changes do not negatively impact the family's benefits until recertification (exceptions noted)
- If a change is reported that benefits a family (for example, results in a lower co-pay), that change will be processed

Required Reporting and Benefit Impact

- Families are required to report:
 - A change of address
 - Child no longer in the home
 - Income that exceeds 85% SMI
- These are the only circumstances that result in a loss of benefits mid-certification period (Note that children who turn 14 years old during the certification period will also lose benefits as they have aged out)



CCAP Approved Child Care Providers

All licensed and license-exempt child care providers are encouraged to become CCAP approved to provide the greatest access to programming for children participating in CCAP.

Becoming a CCAP Provider

- Application is open to all licensed and license-exempt providers
- Providers apply online through RISES
- The Office of Child Care's provider management team processes the application and adds payment information to the RIBridges system

Responsibilities of a CCAP Provider

- Complete New CCAP Provider Orientation online with the Center for Early Learning Professionals (CELP)
- Utilize the Provider Portal to enroll/disenroll children using the certificate number provided by the family and to submit attendance
- Maintain up to date parent-provider agreements
- Communicate any question or issues to the OCC provider management team

CCAP Provider Portal

- Interfaces with RIBridges to connect enrollments/attendance with provider records and inform payments
- Program staff have individual credentials that include multi-factor authentication



CCAP Reimbursement Rates

Center-based rates are set in statute. FCC rates are determined through collective bargaining (State of RI and SEIU 1199NE). Payments are bi-weekly and based on program type and BrightStars rating, and child’s age and authorized/enrolled hours. ACF sets the rate benchmark for equal access at the 75th percentile of the current market rate.

Licensed Center Child Care Weekly Rates

Time Authorized & Enrolled Star Rating → Child's Age Category ↓	Full Time				
	1	2	3	4	5
Infant	\$334.00	\$341.00	\$355.00	\$364.00	\$378.00
Toddler	\$278.00	\$284.00	\$296.00	\$303.00	\$315.00
Preschool	\$236.00	\$247.00	\$255.00	\$263.00	\$273.00
School Age	\$210.00	\$215.00	\$231.00	\$250.00	\$263.00

Child's Age Category:

- Infant/Toddler: 1 week up to 3 years of age
- Preschool: 3 years up to 1st grade entry (includes ALL Kindergarten children)
- School Age: 1st grade up to 13 years of age

Licensed Family Child Care Weekly Rates

Time Authorized & Enrolled:

- Full Time: 30 hours or more per week
- Three Quarter Time: 20-29 hours per week
- Half Time: 10-19 hours per week
- Quarter Time: 0-9 hours per week

Time Authorized & Enrolled Star Rating → Child's Age Category ↓	Full Time				
	1	2	3	4	5
Infant/Toddler	\$ 262.66	\$ 266.86	\$ 270.02	\$ 273.16	\$ 276.31
Preschool	\$ 220.63	\$ 231.14	\$ 239.54	\$ 251.10	\$ 262.66
School Age	\$ 194.37	\$ 199.62	\$ 215.38	\$ 236.40	\$ 246.90



Funding and Cost of Care

The Child Care and Development Block Grant (CCDBG) is the federal grant program that funds Rhode Island's Child Care Assistance Program.

Cost of Care per Child 2024 - Rhode Island Market Rate Survey

- Center Based Cost of Care Overall: **\$9,158**
- Family Child Care Cost of Care Overall: **\$9,603**

VARIABLES – both provider types

BrightStars Rating

Age of Child

Authorized Hours

Infant care = highest cost per child

School Age care = lowest cost per child

Attributed to personnel costs associated with child to staff ratios

Program Cost and Projections

- Average cost per child FY2024: **\$10,257**
 - Total Spend 2024: **\$59.1M**
- Projected FY2025 cost per child: **\$10,979**
 - Projected Spend 2025: **\$65.8M**

Projected increase is based on:

July 2024 increase in center rates (5%)

FCC rate increase (2.5%)

Increased accessibility: 261%FPL entry point, 300%FPL CCAP for Child Care



Current and Upcoming CCAP Priorities

CCAP for Child Care Educators and Staff	Program Integrity: CCAP Provider Monitoring, Feedback, and TA	Meet and Sustain Improper Payment Error Rate Benchmark	Policy and System Enhancements
<ul style="list-style-type: none">• 3-year extension• Ensuring CCAP application pre-requisite is implemented	<ul style="list-style-type: none">• 16 providers/month• 40% of CCAP enrollments• Review enrollments, attendance, parent provider agreements• Feedback and TA• Re-monitoring as needed	<ul style="list-style-type: none">• Cross-department team:<ul style="list-style-type: none">• Program• Training• Policy• IT System• Operations• Program Integrity• 20+ case reviews monthly• Quarterly DHS and ACF leadership updates	<ul style="list-style-type: none">• Providing child care services through grants or contracts• Payment based on enrollment not attendance• Job Search need reason• Streamline authorized hours categories• simplify the application process• improve provider portal and payment practices



Questions?

Feedback, questions,
recommendations,
collaborations?

Sharon Fitzgerald

Sharon.fitzgerald@dhs.ri.gov

Nicole Chiello

Nicole.Chiello@dhs.ri.gov



Public Comment

